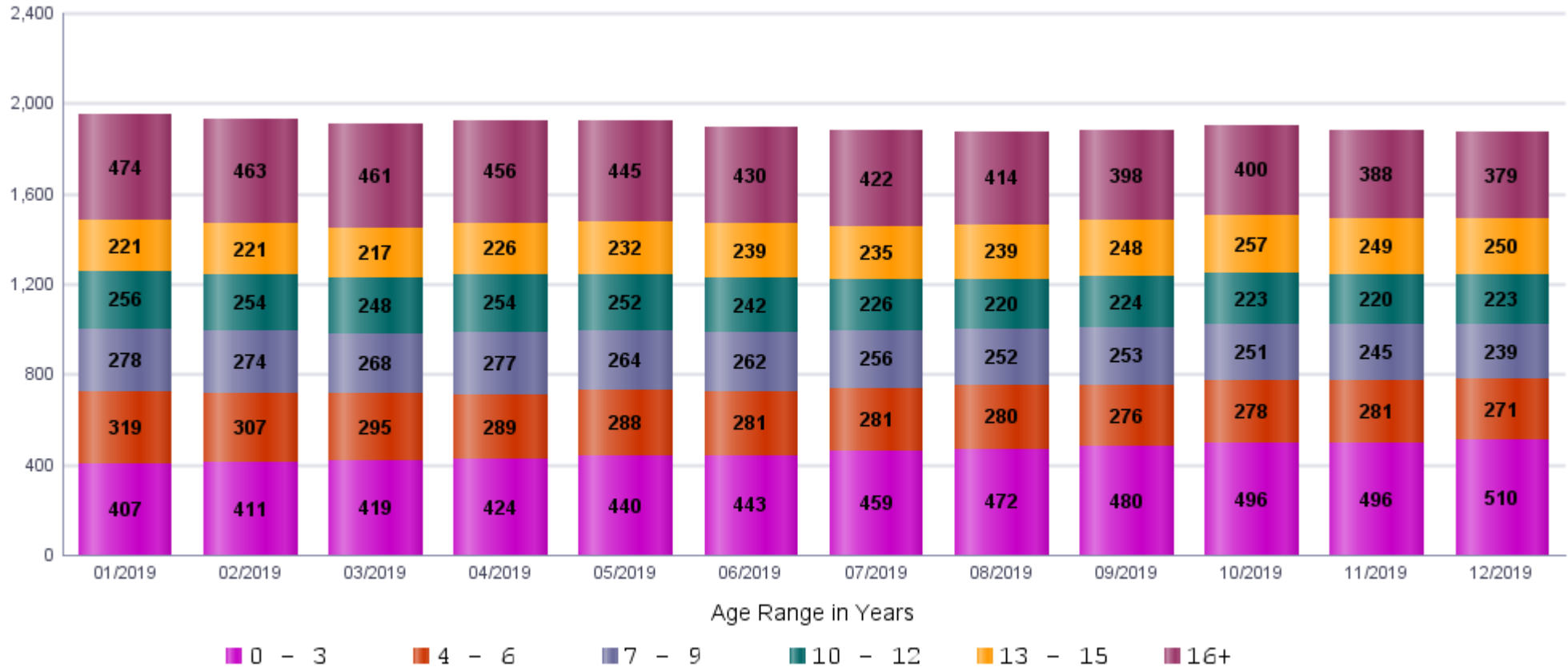


## Monthly Custody Summary Report

### Graphical Summary of the Total Children in Hamilton County JFS Custody During the Month Between 01/01/2019 and 12/31/2019



	Jan 2019	Feb 2019	Mar 2019	Apr 2019	May 2019	Jun 2019	Jul 2019	Aug 2019	Sep 2019	Oct 2019	Nov 2019	Dec 2019
<b>0 - 3</b>	407 20.8%	411 21.3%	419 22.0%	424 22.0%	440 22.9%	443 23.4%	459 24.4%	472 25.1%	480 25.5%	496 26.0%	496 26.4%	510 27.2%
<b>4 - 6</b>	319 16.3%	307 15.9%	295 15.5%	289 15.0%	288 15.0%	281 14.8%	281 15.0%	280 14.9%	276 14.7%	278 14.6%	281 15.0%	271 14.5%
<b>7 - 9</b>	278 14.2%	274 14.2%	268 14.0%	277 14.4%	264 13.7%	262 13.8%	256 13.6%	252 13.4%	253 13.5%	251 13.2%	245 13.0%	239 12.8%
<b>10 - 12</b>	256 13.1%	254 13.2%	248 13.0%	254 13.2%	252 13.1%	242 12.8%	226 12.0%	220 11.7%	224 11.9%	223 11.7%	220 11.7%	223 11.9%
<b>13 - 15</b>	221 11.3%	221 11.5%	217 11.4%	226 11.7%	232 12.1%	239 12.6%	235 12.5%	239 12.7%	248 13.2%	257 13.5%	249 13.3%	250 13.4%
<b>16+</b>	474 24.2%	463 24.0%	461 24.2%	456 23.7%	445 23.2%	430 22.7%	422 22.5%	414 22.1%	398 21.2%	400 21.0%	388 20.6%	379 20.2%
<b>Total</b>	<b>1,955 100.0%</b>	<b>1,930 100.0%</b>	<b>1,908 100.0%</b>	<b>1,926 100.0%</b>	<b>1,921 100.0%</b>	<b>1,897 100.0%</b>	<b>1,879 100.0%</b>	<b>1,877 100.0%</b>	<b>1,879 100.0%</b>	<b>1,905 100.0%</b>	<b>1,879 100.0%</b>	<b>1,872 100.0%</b>