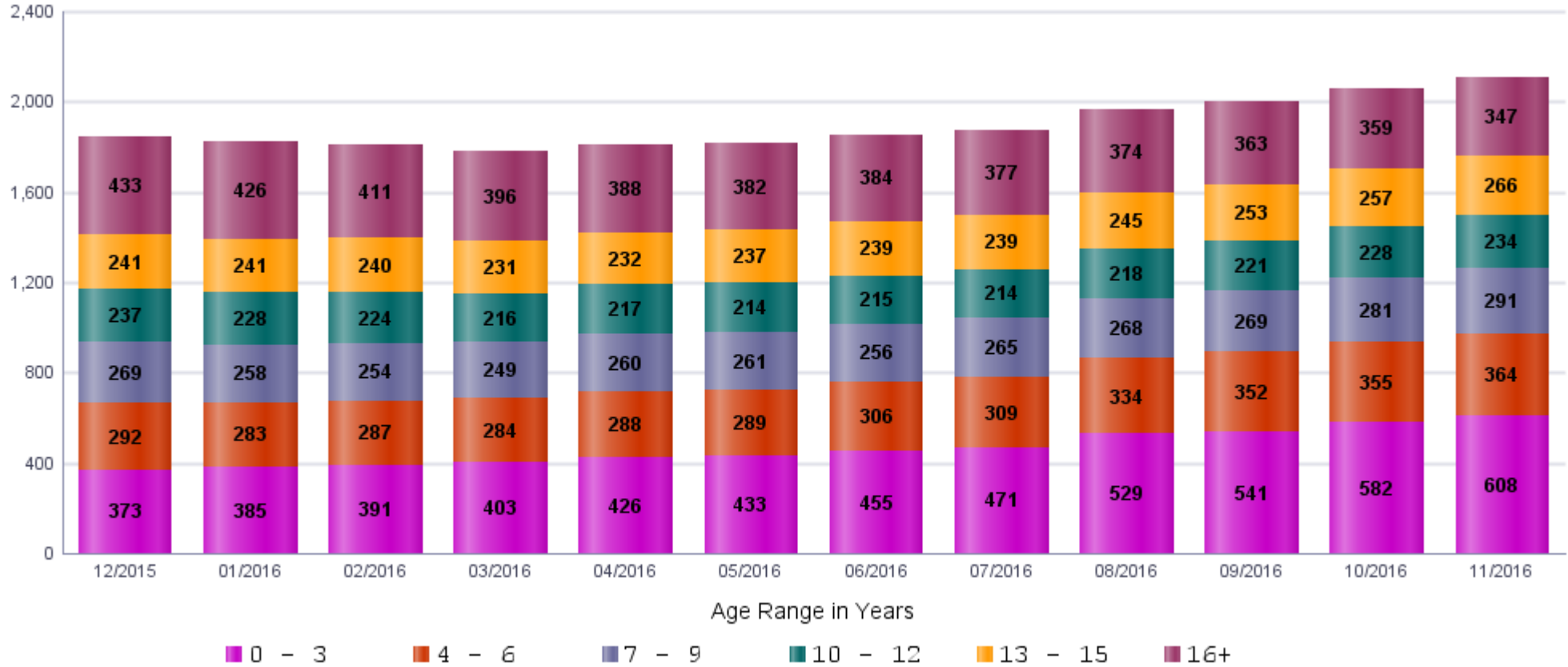


## Monthly Custody Summary Report

### Graphical Summary of the Total Children in Hamilton County JFS Custody During the Month Between 12/01/2015 and 11/30/2016



	Dec 2015	Jan 2016	Feb 2016	Mar 2016	Apr 2016	May 2016	Jun 2016	Jul 2016	Aug 2016	Sep 2016	Oct 2016	Nov 2016
<b>0 - 3</b>	373 20.2%	385 21.1%	391 21.6%	403 22.7%	426 23.5%	433 23.8%	455 24.5%	471 25.1%	529 26.9%	541 27.1%	582 28.2%	608 28.8%
<b>4 - 6</b>	292 15.8%	283 15.5%	287 15.9%	284 16.0%	288 15.9%	289 15.9%	306 16.5%	309 16.5%	334 17.0%	352 17.6%	355 17.2%	364 17.3%
<b>7 - 9</b>	269 14.6%	258 14.2%	254 14.1%	249 14.0%	260 14.4%	261 14.4%	256 13.8%	265 14.1%	268 13.6%	269 13.5%	281 13.6%	291 13.8%
<b>10 - 12</b>	237 12.8%	228 12.5%	224 12.4%	216 12.1%	217 12.0%	214 11.8%	215 11.6%	214 11.4%	218 11.1%	221 11.1%	228 11.1%	234 11.1%
<b>13 - 15</b>	241 13.1%	241 13.2%	240 13.3%	231 13.0%	232 12.8%	237 13.1%	239 12.9%	239 12.7%	245 12.4%	253 12.7%	257 12.5%	266 12.6%
<b>16+</b>	433 23.5%	426 23.4%	411 22.7%	396 22.3%	388 21.4%	382 21.0%	384 20.7%	377 20.1%	374 19.0%	363 18.2%	359 17.4%	347 16.4%
<b>Total</b>	<b>1,845 100.0%</b>	<b>1,821 100.0%</b>	<b>1,807 100.0%</b>	<b>1,779 100.0%</b>	<b>1,811 100.0%</b>	<b>1,816 100.0%</b>	<b>1,855 100.0%</b>	<b>1,875 100.0%</b>	<b>1,968 100.0%</b>	<b>1,999 100.0%</b>	<b>2,062 100.0%</b>	<b>2,110 100.0%</b>