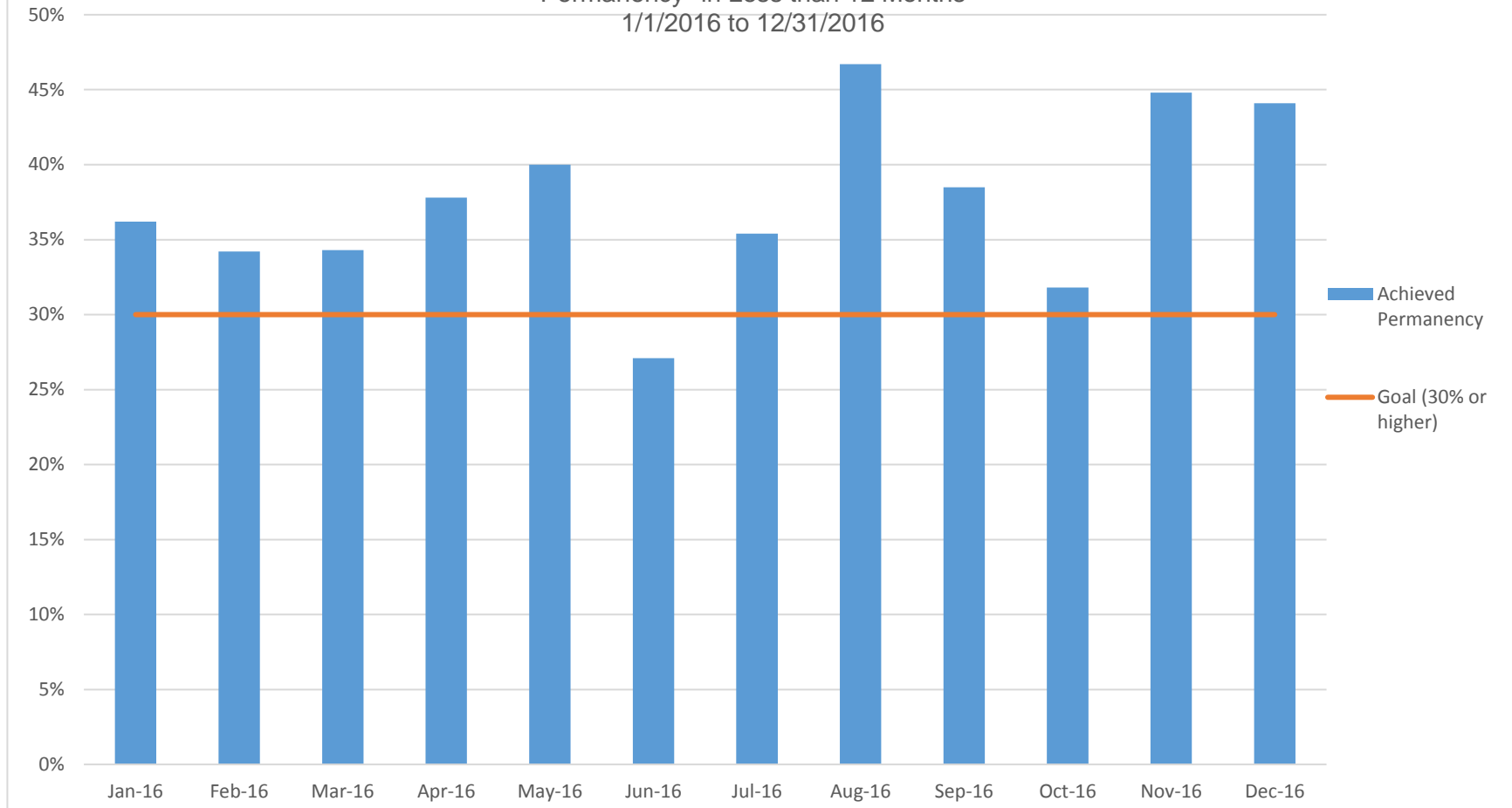


Permanency in 12 Months (of those entering care 12 months ago)

Percent of Children Who Entered Hamilton County JFS Custody 12 Months Ago Who Achieved
Permanency* in Less than 12 Months
1/1/2016 to 12/31/2016



Report Period	Jan-16	Feb-16	Mar-16	Apr-16	May-16	Jun-16	Jul-16	Aug-16	Sep-16	Oct-16	Nov-16	Dec-16
Met	25 36.2%	26 34.2%	23 34.3%	48 37.8%	36 40.0%	23 27.1%	45 35.4%	35 46.7%	40 38.5%	28 31.8%	43 44.8%	41 44.1%
Not met	44 63.8%	50 65.8%	44 65.7%	79 62.2%	54 60.0%	62 72.9%	82 64.6%	40 53.3%	64 61.5%	60 68.2%	53 55.2%	52 55.9%
Total	69 100.0%	76 100.0%	67 100.0%	127 100.0%	90 100.0%	85 100.0%	127 100.0%	75 100.0%	104 100.0%	88 100.0%	96 100.0%	93 100.0%
Entered Care	Jan-15	Feb-15	Mar-15	Apr-15	May-15	Jun-15	Jul-15	Aug-15	Sep-15	Oct-15	Nov-15	Dec-15

*Permanency is defined as a discharge to either reunification, guardianship, living with other relative, or adoption